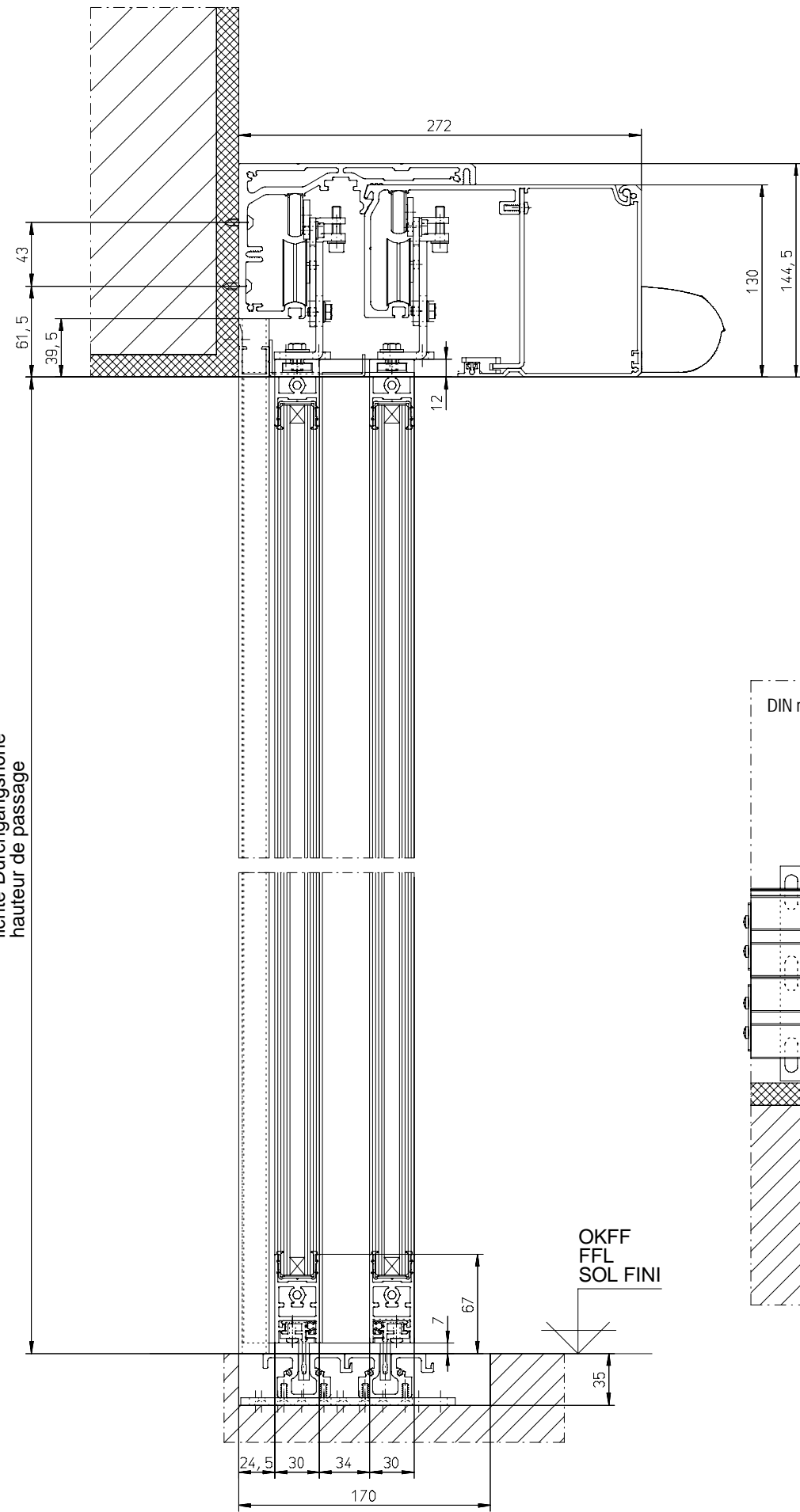
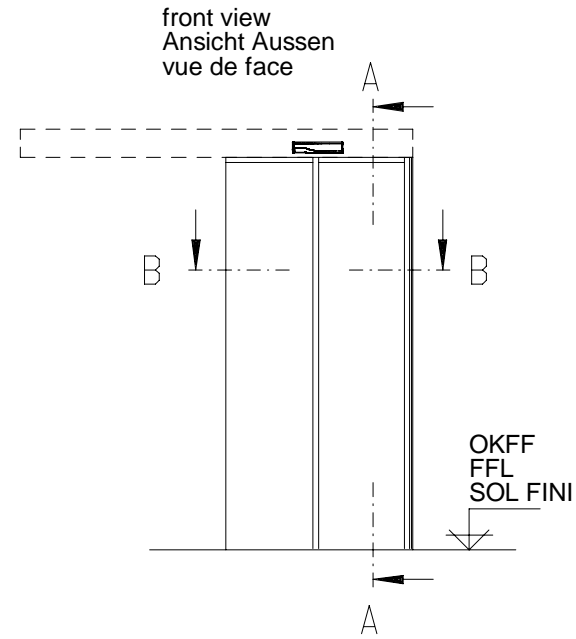


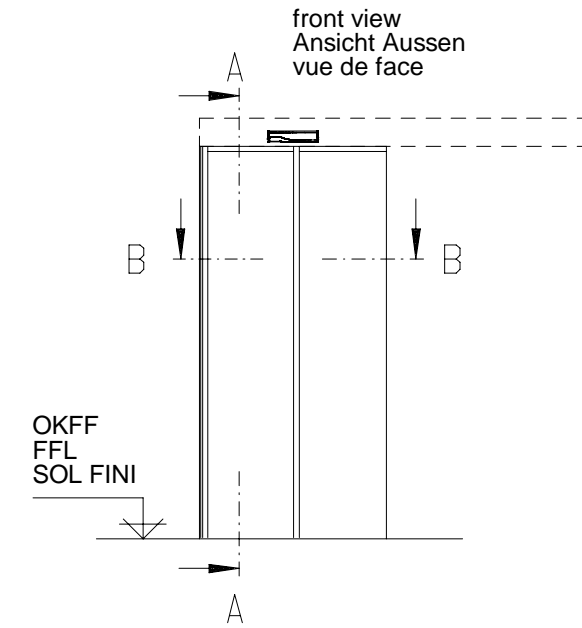
A - A



DIN rechts / rechts öffnend

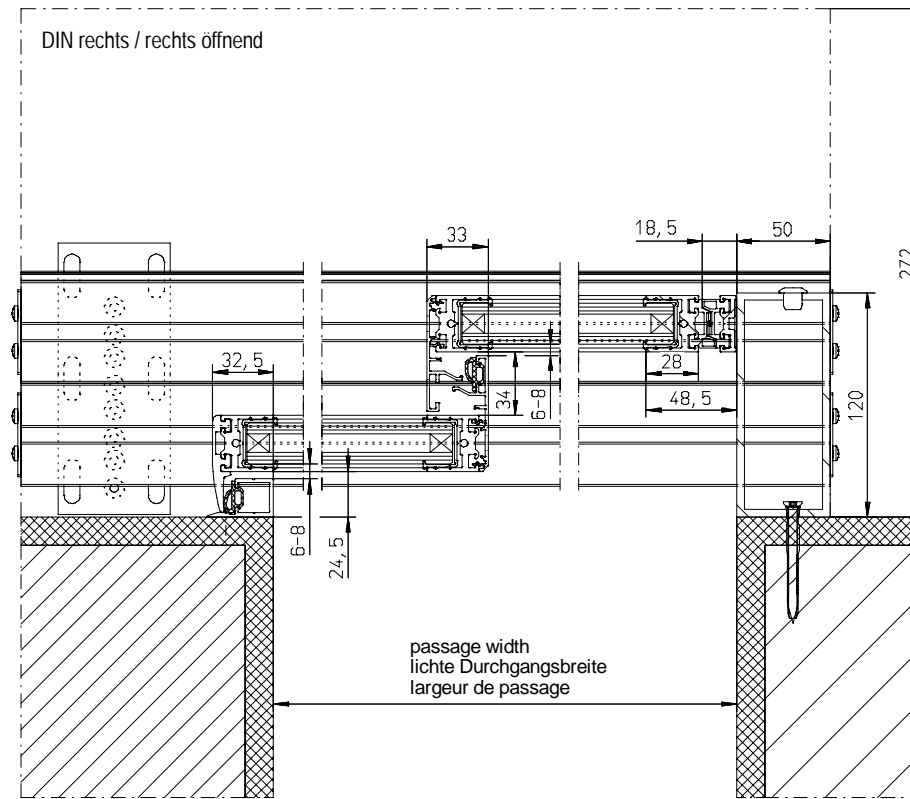


DIN links / links öffnend



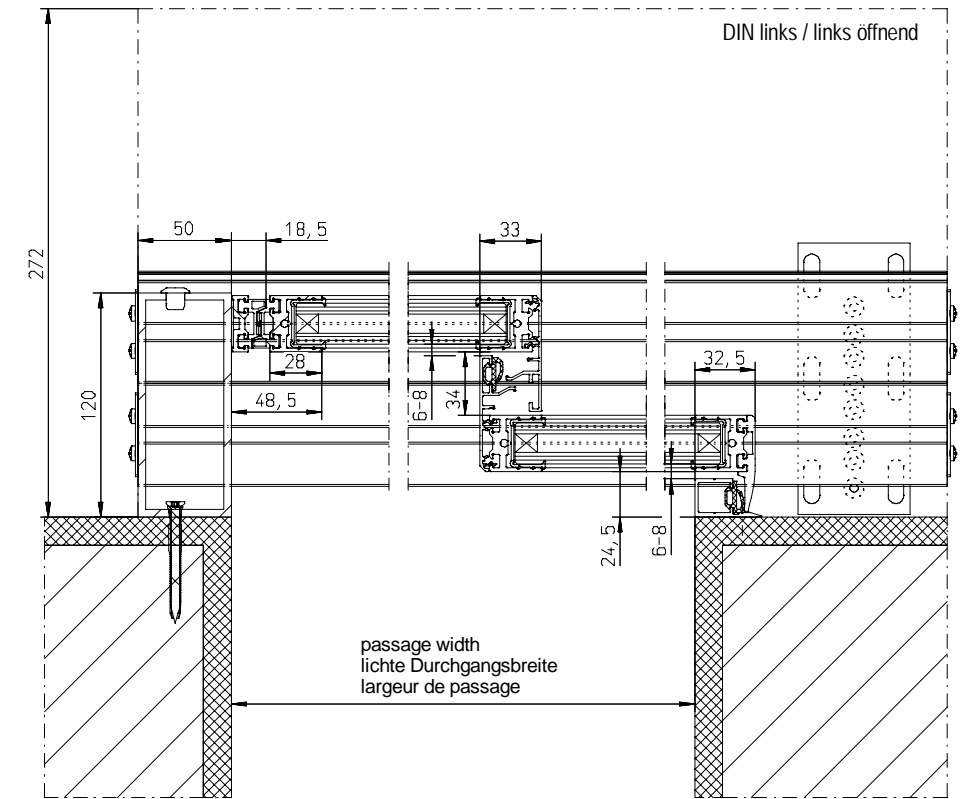
B - B

cover / Antriebsverkleidung / capot



B - B

cover / Antriebsverkleidung / capot



passage height
lichte Durchgangshöhe
hauteur de passage

passage width
lichte Durchgangsbreite
largeur de passage

passage width
lichte Durchgangsbreite
largeur de passage

OKFF
FFL
SOL FINI

Surface treatment	Material	Scale	1:1
Tolerance	Mass Weight (kg)	Part No.	Date
		EMT/EMTF-MW	22.08.2020
Type	Norm	Revision	
Proprietary rights apply in accordance with ISO 10076			
GU GU Automatic GmbH www.gu-automatic.com	Description -Profilsystem G30- 2-flügelig -Profile system G30- 2 door Leaves	Drawing No. A-9905100-2	Sheet 1